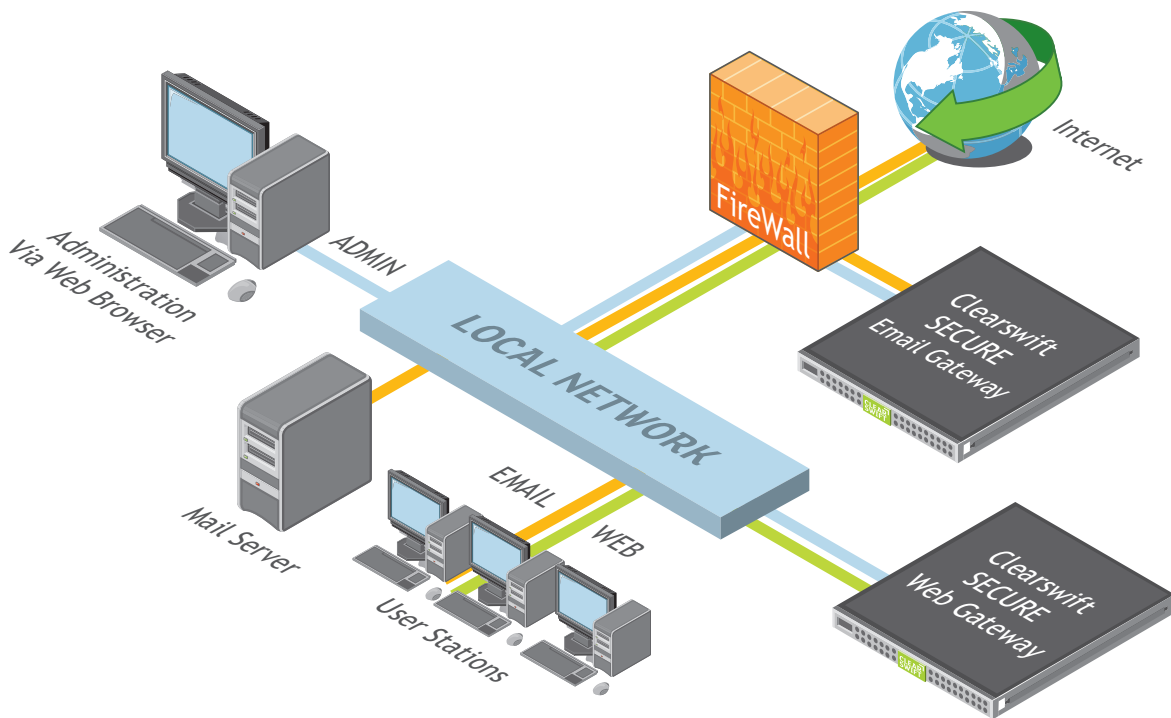


Award-winning unified information security from Clearswift.

Fully integrated web and email gateway security solution, providing - protection from inbound threats, policy based encryption, and data loss prevention.



Clearswift SECURE Web and Email Gateways

Strong web and email security are vital to business. Without trustworthy online security tools and policies in place online threats, like spam, malware and data leakage can bring a modern workplace to its knees. Balancing the requirement for strong protection with a need to communicate freely is therefore crucial to safe and successful operations.

That's why thousands of organizations around the globe choose Clearswift's award-winning SECURE Web Gateway and Clearswift SECURE Email Gateway to protect their information security.

Clearswift products combine seamlessly to enable both web and email traffic to flow safely into and out of the workplace, providing truly unified information security.

Unify your information security

Balancing the requirement for strong network security with the need to harness email and collaborative online technologies is essential for business growth. Working together, Clearswift's SECURE Web and Email Gateways strike the perfect balance.

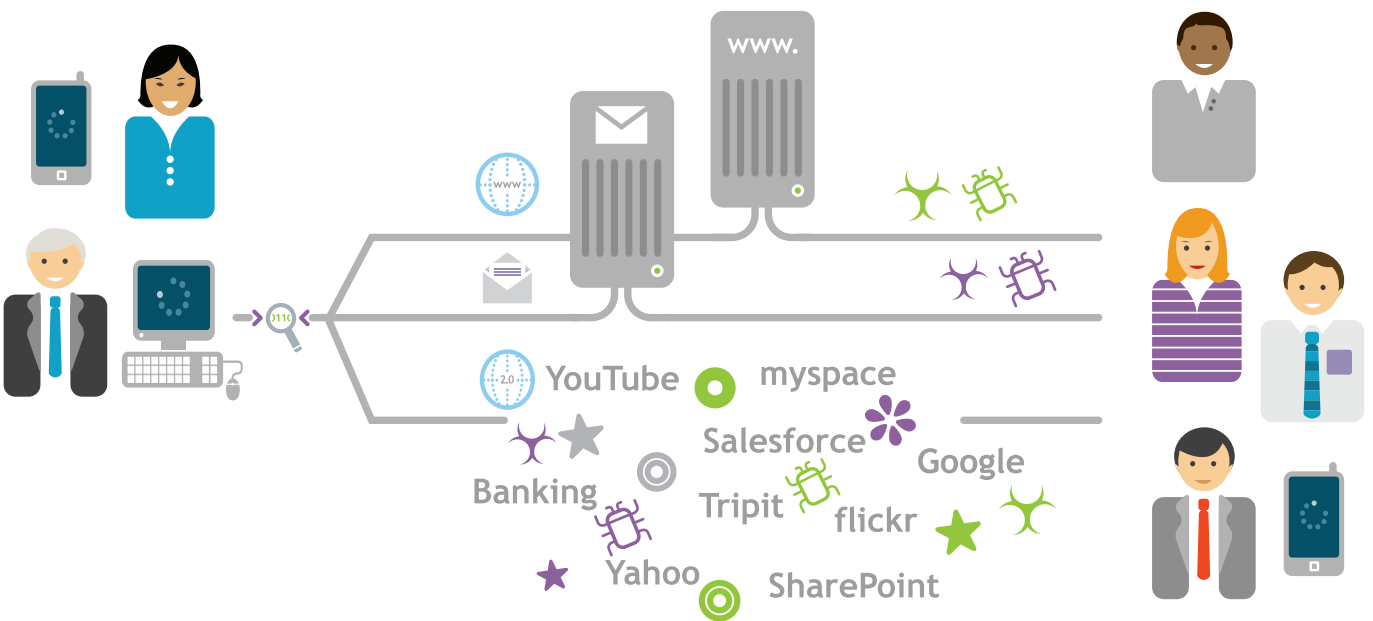
The suite is built on Clearswift MIMESweeper, a tried and trusted content-inspection and filtering technology. Clearswift SECURE Web and Email Gateways inspect internet traffic in real time, using a shared MIMESweeper policy engine to identify and manage violations. Set policy just once and apply it to all electronic communications channels across your organization.

Single policy, positively simple

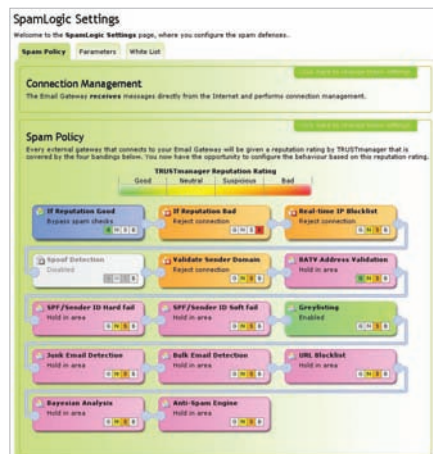
The single, easy-to-use policy centre employed by Clearswift SECURE Web and Email Gateways saves time, ensures consistency and improves compliance. In turn data leaks are prevented and regulatory and reputational risks mitigated.

Confidently enable and manage business-enhancing online technologies like social media and collaborative services, while allowing employees to communicate freely via email without fear of data leaks or malware infections.

Put simply, with Clearswift's SECURE product suite deployed, the online world is transformed from a high-risk environment to an open, safe place to collaborate and communicate.



SECURE Email Gateway 3.1 screen shots.



Dependable protection, great flexibility

There's no compromise with Clearswift SECURE Web and Email Gateways: you can have reliable security AND flexibility to set controls that suit your business.

Time schedules can be applied to specific websites or content categories, for example, allowing users managed access to particular content types. Individual users can be allocated time quotas for maximum policy flexibility. Customizable block messages can include override options for users, providing both protection for your organization and freedom for employees to continue conducting essential business.

Email messages can be encrypted using a variety of standard methods, including S/MIME and PGP, while still passing through the content-inspection engine to prevent information leakage. At the same time, Clearswift's TRUSTmanager and SpamLogic technologies identify and filter 99.5% of spam.

All traffic is inspected against policy, supported by managed lists and compliance dictionaries. These include Payment Card Industry (PCI) patterns, Personally Identifiable Information (PII), Gramm-Leach-Bliley Act (GLBA), Health Insurance Portability and Accountability Act (HIPAA), Securities and Equities Commission (SEC) and the Sarbanes-Oxley Act (SOX).

Clearswift SECURE Web and Email Gateways have bidirectional malware scanning built in, so your organization's network will be kept free of viruses, spyware, keyloggers and botnet call-homes. The anti-malware engine stops both known and new threats.

Powerful reporting and management

Clearswift SECURE Web and Email Gateways provide powerful management and reporting, from a simple web-based interface.

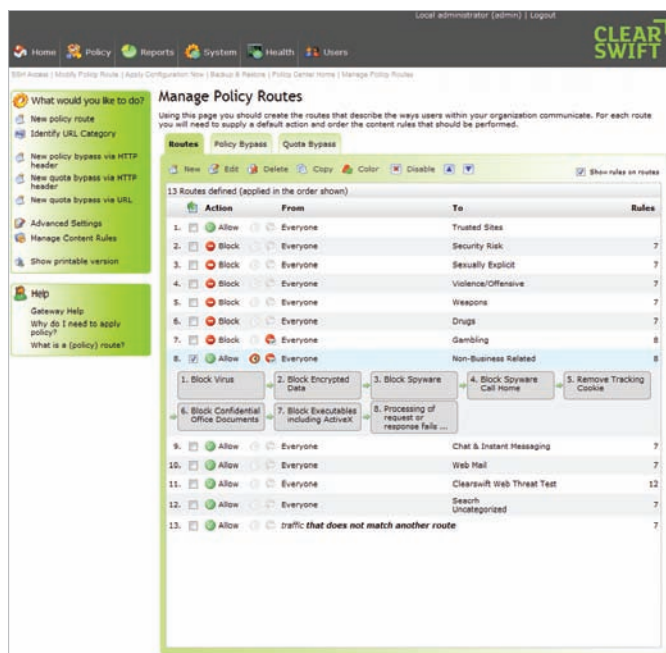
Hundreds of easily modified reports can be executed across multiple Clearswift SECURE Web and Email Gateways for a consolidated view of user activity. Reports are interactive, so you can drill down on the fly - no more time and money lost on wasted reports.

And finally...

We don't like to boast. But we are proud about the fact that Clearswift SECURE Web and Email Gateways were heralded as a winning team at the prestigious SC Magazine Awards Europe 2010, walking away with top prize in the Best Content Security category.

Choose world-leading, award-winning unified information security - choose Clearswift SECURE Web and Email Gateways.

SECURE Web Gateway 2.1 screen shots.



In more detail...



'Best Content Security'



'Security Product of the Year'

Get in Touch



UK - International HQ
 Clearswift Limited
 1310 Waterside
 Arlington Business Park
 Theale
 Reading
 Berkshire
 RG7 4SA
 UK
 Tel : +44 (0) 118 903 8903
 Fax : +44 (0) 118 903 9000
 Sales: +44 (0) 118 903 8700
 Technical Support: +44 (0) 118 903 8200
 Email: info@clearswift.com

Australia
 Clearswift
 5th Floor
 165 Walker Street
 North Sydney
 New South Wales, 2060
 AUSTRALIA
 Tel : +61 2 9424 1200
 Fax : +61 2 9424 1201
 Email: info@clearswift.com.au

Germany
 Clearswift GmbH
 Amsinckstrasse 67
 20097
 Hamburg
 GERMANY
 Tel : +49 40 23 999-0
 Fax : +49 40 23 999-100
 Email: info@clearswift.de

Japan
 Clearswift K.K.
 7F Hanai Bldg.
 1-2-9 Shibakouen,
 Minato-ku, Tokyo
 105-0011
 JAPAN
 Tel : +81 (3)5777 2248
 Fax : +81 (3)5777 2249
 Email: info.jp@clearswift.co.jp

Spain
 Clearswift España S.L.
 Cerro de los Gamos 1, Edif. 1
 28224 Pozuelo de Alarcón
 Madrid
 SPAIN
 Tel : +34 91 7901219 / +34 91 7901220
 Fax : +34 91 7901112
 Email: info.es@clearswift.com

United States
 Clearswift Corporation
 161 Gaither Drive
 Centerpointe
 Suite 101
 Mt. Laurel, NJ 08054
 UNITED STATES
 Tel : +1 856-359-2360
 Fax : +1 856-359-2361
 Email: info@us.clearswift.com

Comprehensive deployment options

Clearswift understands that, when it comes to network security, no two organizations have the same needs.

The deployment choices for Clearswift SECURE Web and Email Gateways include pre-installation onto Dell hardware and virtualized gateways for VMware ESX/ESXi and Microsoft Hyper-V (for Clearswift SECURE Email Gateway only). Software (ISO) images for installation on your company's own hardware are also offered. Clearswift's range of software and virtualized gateways are available for download, with larger images optionally supplied on DVD.

An easy-to-follow, step-by-step guide is included to walk you through the deployment process. Typically, deployment takes no more than 45 minutes.

Technical specifications

Clearswift SECURE Web Gateway

Scalability	
All models	Up to nine SECURE Web Gateways linked into one common 'peer' group
N+1 resilience and scalability	By peering an additional support gateway
Deployment	
Getting-started guide	Seven-step deployment guide; typical deployment takes no more than 45 minutes
Evaluation guide	Step-by-step guide for evaluation of key Clearswift SECURE Web Gateway features
Key Components	
Operating system (OS)	Penetration-tested, hardened Clearswift Linux
User interface (UI)	Web-based UI offering intuitive roles-based management
MIMESweeper™	Clearswift's content-aware filtering and policy management, reporting, logging and auditing engine with full lexical scanning and lexical expression building
URL filter	Comprehensive 76 category URL filter from the world's leading URL filtering vendor
Kaspersky anti-virus	Award-winning anti-virus and malware engine consistently independently verified as one of the leading solutions
Anti-spyware	Based on Sunbelt Software's award-winning CounterSpy anti-spyware solution
Cache	10GB self-managing cache for bandwidth optimisation

Clearswift SECURE Email Gateway

Scalability	
All models	Up to nine SECURE Email Gateways in one common 'peer' group
N+1 resilience and scalability	By peering an additional support gateway
Deployment	
Getting-started guide	Seven-step deployment guide; typical deployment takes no more than 45 minutes
Evaluation guide	Step-by-step guide for evaluation of key Clearswift SECURE Email Gateway features
Key Components	
Operating system (OS)	Penetration-tested, hardened Clearswift Linux
User interface (UI)	Web-based UI offering intuitive roles-based management
MIMESweeper™	Our content-aware filtering and policy management, reporting, logging and auditing engine with full lexical scanning and lexical expression building
Email encryption	Policy-based email encryption using industry standard PGP, S/MIME and ad-hoc methods to send messages securely with no encryption experience
TRUSTmanager™	Connectivity and sender reputation anti-spam filter
SpamLogic™	Multi-engine anti-spam filtering
ThreatLab™ Live	Pro-active anti-spam signature updates and new malware protection
ThreatLab™ managed lists	Built-in lists for screening common business terms, profanity and compliance terms
Kaspersky anti-virus	Award-winning anti-virus and malware engine consistently independently verified as one of the leading solutions
Zero-hour anti-malware	Pre-emptive blocking of suspicious messages based on traffic pattern behaviour, works in conjunction with built-in AV to provide additional anti-malware security