



Barracuda Web Filter

Protects Web users from malicious and inappropriate content

The Barracuda Web Filter is a complete content filtering and application blocking solution designed to enforce acceptable Internet usage policies. The Barracuda Web Filter includes powerful, award-winning spyware and virus protection. With no per user license fees, the Barracuda Web Filter offers the most affordable content and spyware protection available.

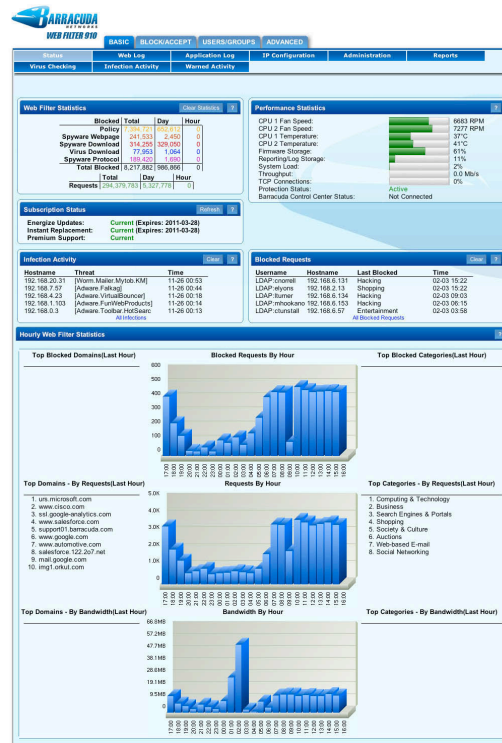
Flexible, Comprehensive Filtering

Designed for the enterprise, the Barracuda Web Filter enables organizations to set up custom policies for particular users and groups across multiple time zones. The Barracuda Web Filter integrates with popular LDAP directory servers such as Microsoft Active Directory, for both authentication and group membership information. It also has remote filtering agents for Windows PCs and Macs to protect remote users' computers.

With Web security at the gateway, the Barracuda Web Filter prevents new spyware and virus infections as they attempt to penetrate the network. By adaptively targeting those machines that are infected, the Barracuda Web Filter provides widespread spyware protection and removal without requiring preloaded client software for every machine on the network.

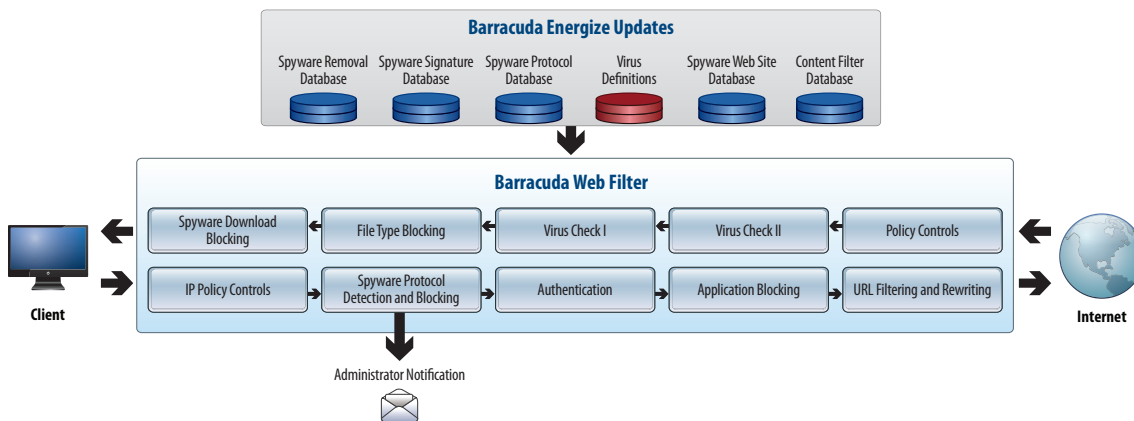
Easy-to-Use and Maintain

With no software to install or network modifications required, the Barracuda Web Filter is easy to set up. Energize Updates are delivered automatically by Barracuda Central, an advanced technology center where engineers work continuously to provide the most effective methods to combat the ever changing spyware and virus variants. Energize Updates include the latest spyware and virus definitions, along with content filter categories and security updates that are distributed hourly for continuous protection against the latest threats.



The Barracuda Web Filter monitors attempted policy violations, infected clients, blocked spyware and virus downloads.

Barracuda Web Filter Architecture



BARRACUDA WEB FILTER

MODEL
210
310
410
610
810
910



BARRACUDA WEB FILTER

MODEL 210 310 410 610 810 910



Internet



Barracuda Web Filter



Clients Inside Network

Typical Deployment

TECHNICAL SPECIFICATIONS

Security Features

CONTENT FILTERING

- Category filtering
- HTTP/HTTPS support
- URL filtering
- Image safe search
- File type blocking
- Open proxy blocking

APPLICATION CONTROL

- IM blocking
- Internet application blocking
- IP and port blocking

ADVANCED POLICY CREATION

- Default guest and user policies
- User and group policy exceptions
- LDAP directory server/NTLM integration
- Windows domain controller integration
- Terminal Server integration
- Local users and groups
- Network IP address policies
- Time-of-day policies
- Custom categories

NETWORK THREAT PROTECTION

- Spyware site blocking
- Spyware download blocking
- Dual-layer virus protection

NETWORK THREAT PROTECTION (cont.)

- Detection of infection activity
- Spyware protocol blocking

SPYWARE REMOVAL

- Remove spyware from Windows computers
- Downloaded as an ActiveX control

System Features

- Web-based interface
- Statistical reports
- Comprehensive logging
- Secure remote administration
- Web acceleration/caching
- Traffic reporting
- Remote filtering agent - Windows PCs & Macs

INTEGRATED REPORTING ENGINE

- Graphical summaries
- Detailed user and group reports
- Time/session reporting
- Scheduled reports
- Report export

Hardware Features

CONNECTORS

- Standard VGA
- PS/2 keyboard/mouse
- Ethernet (see chart below)
- Serial port (DB-9)

FRONT PANEL INDICATORS

- Power indicator
- Disk activity indicator
- Spyware blocked indicator

FRONT PANEL INDICATORS (cont.)

- Virus blocked indicator
- Data transmission indicator
- Power button
- Reset button

POWER REQUIREMENTS

- AC input voltage 100-240 volts
- Frequency 50/60 Hz

Support Options

ENERGIZE UPDATES SUBSCRIPTION

- Standard technical support
- Hourly spyware rule and definition updates
- Hourly virus definition updates
- Hourly content filter database updates
- Hourly Spyware Removal Tool updates

INSTANT REPLACEMENT SERVICE

- Replacement unit shipped next business day
- 24x7 technical support

| MODEL COMPARISON | MODEL 210 | MODEL 310 | MODEL 410 | MODEL 610 | MODEL 810 | MODEL 910 |
|-----------------------------|-----------------|-------------------|-------------------|-------------------|-------------------|-------------------|
| CAPACITY* | | | | | | |
| Throughput (Mbps) | 5 | 10 | 20 | 50 | 200 | 300 |
| Web Cache Size | | 10 GB | 50 GB | 100 GB | 200 GB | 300 GB |
| Concurrent Users | 25-100 | 50-200 | 150-500 | 450-1,500 | 1,000-3,000 | 2,500-4,500 |
| Active TCP Connections | 50-400 | 400-800 | 800-2,000 | 2,000-6,000 | 6,000-10,000 | 10,000-15,000 |
| HARDWARE | | | | | | |
| Rackmount Chassis | 1U Mini | 1U Mini | 1U Mini | 1U Fullsize | 2U Fullsize | 2U Fullsize |
| Dimensions (in) | 16.8 x 1.7 x 9 | 16.8 x 1.7 x 14 | 16.8 x 1.7 x 14 | 16.8 x 1.7 x 22.6 | 17.4 x 3.5 x 25.5 | 17.4 x 3.5 x 25.5 |
| Dimensions (cm) | 42.7 x 4.3 x 23 | 42.7 x 4.3 x 35.6 | 42.7 x 4.3 x 35.6 | 42.7 x 4.3 x 57.4 | 44.2 x 8.9 x 64.8 | 44.2 x 8.9 x 64.8 |
| Weight (lbs/kg) | 8 / 3.6 | 12 / 5.4 | 12 / 5.4 | 26 / 11.8 | 46 / 20.9 | 52 / 23.6 |
| Ethernet Passthrough** | 1 x 10/100 | 1 x 10/100 | 1 x Gigabit | 1 x Gigabit | 1 x Gigabit | 1 x Gigabit |
| AC Input Current (Amps) | 1.0 | 1.2 | 1.4 | 1.8 | 4.1 | 5.4 |
| Redundant Disk Array (RAID) | | | | Hot Swap | Hot Swap | Hot Swap |
| ECC Memory | | | | ✓ | ✓ | ✓ |
| Redundant Power Supply | | | | | Hot Swap | Hot Swap |
| FEATURES | | | | | | |
| Hardened and Secured OS | ✓ | ✓ | ✓ | ✓ | ✓ | ✓ |
| Content Filtering | ✓ | ✓ | ✓ | ✓ | ✓ | ✓ |
| Application Control | ✓ | ✓ | ✓ | ✓ | ✓ | ✓ |
| Advanced Policy Creation | ✓ | ✓ | ✓ | ✓ | ✓ | ✓ |
| Network Threat Protection | ✓ | ✓ | ✓ | ✓ | ✓ | ✓ |
| Spyware Removal | ✓ | ✓ | ✓ | ✓ | ✓ | ✓ |
| Delegated Administration | ✓ | ✓ | ✓ | ✓ | ✓ | ✓ |
| Syslog | | ✓ | ✓ | ✓ | ✓ | ✓ |
| Ethernet Bypass Hardware | | ✓ | ✓ | ✓ | ✓ | ✓ |
| Remote Filtering Agent | | | ✓ | ✓ | ✓ | ✓ |
| SNMP/API | | | ✓ | ✓ | ✓ | ✓ |
| Linked Management | | | ✓ | ✓ | ✓ | ✓ |
| WCCP | | | ✓ | ✓ | ✓ | ✓ |

US 17.1 Specifications subject to change without notice. *Capacity depends on environment and selected options. **Each Ethernet passthrough has two Ethernet jacks. Copyright © 2011 Barracuda Networks Inc. • 3175 S. Winchester Blvd., Campbell, CA 95008 • 1-888-ANTI-SPAM (1-888-268-4772) • www.barracuda.com